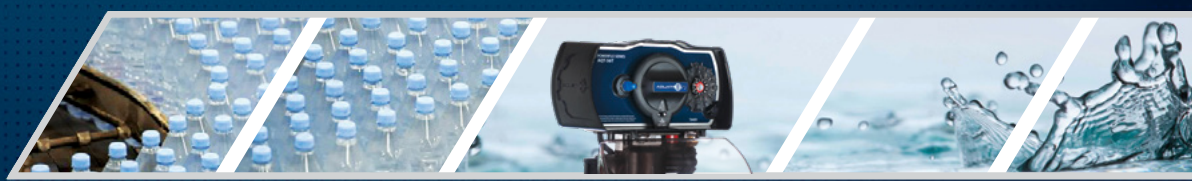


AQUATROL



AQUATROL™
PRESSURE TANKS



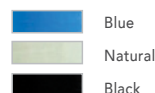
	SIZE (DIAMETER X HEIGHT)			CHARACTERISTICS		TOTAL VOLUME	
	Part Number	Inches	Millimeters	Connection	Color	Gallons	Liters
6"	AT-0618BL-25T	6 x 18	152 x 457	2.5" T	Blue	1.8	6.8
	AT-0713BL-25T	7 x 13	177 x 330	2.5" T	Blue	1.9	7.2
7"	AT-0713BK-25T	7 x 13	177 x 330	2.5" T	Black	1.9	7.2
	AT-0717BK-25T	7 x 17	177 x 431	2.5" T	Black	2.5	9.5
	AT-0717BL-25T	7 x 17	177 x 431	2.5" T	Blue	2.5	9.5
	AT-0735BL-25T	7 x 35	177 x 889	2.5" T	Blue	5.2	19.7
	AT-0744BL-25T	7 x 44	177 x 1117	2.5" T	Blue	6.4	24.2
	AT-0817BL-25T	8 x 17	203 x 431	2.5" T	Blue	2.9	11.0
8"	AT-0835BL-25T	8 x 35	203 x 889	2.5" T	Blue	6.6	25.0
	AT-0844BL-25T	8 x 44	203 x 1117	2.5" T	Blue	8.7	32.9
	AT-0844BK-25T	8 x 44	203 x 1117	2.5" T	Black	8.7	32.9
	AT-0935BL-25T	9 x 35	228 x 889	2.5" T	Blue	8.3	31.4
9"	AT-0948BL-25T	9 x 48	228 x 1219	2.5" T	Blue	12.7	48.1
	AT-0948BK-25T	9 x 48	228 x 1219	2.5" T	Black	12.7	48.1
	AT-1017BL-25T	10 x 17	254 x 431	2.5" T	Blue	4.4	16.7
10"	AT-1017BK-25T	10 x 17	254 x 431	2.5" T	Black	4.4	16.7
	AT-1035BK-25T	10 x 35	254 x 889	2.5" T	Black	10.2	38.6
	AT-1035BL-25T	10 x 35	254 x 889	2.5" T	Blue	10.2	38.6
	AT-1044BL-25T	10 x 44	254 x 1117	2.5" T	Blue	13.1	49.6
	AT-1054BK-25T	10 x 54	254 x 1371	2.5" T	Black	16.4	62.1
	AT-1054BL-25T	10 x 54	254 x 1371	2.5" T	Blue	16.4	62.1
	AT-1248BL-25T	12 x 48	304 x 1219	2.5" T	Blue	21.0	79.5
12"	AT-1252BL-25T	12 x 52	304 x 1320	2.5" T	Blue	22.2	84.0
	AT-1252BK-25T	12 x 52	304 x 1320	2.5" T	Black	22.2	84.0
	AT-1265BL-25T	12 x 65	304 x 1651	2.5" T	Blue	28.0	106.0
	AT-1354BL-25T	13 x 54	330 x 1371	2.5" T	Blue	27.5	104.1
13"	AT-1354BK-25T	13 x 54	330 x 1371	2.5" T	Black	27.5	104.1
	AT-1465BL-25T	14 x 65	355 x 1651	2.5" T	Blue	40.6	153.7
14"	AT-1465BK-25T	14 x 65	355 x 1651	2.5" T	Black	40.6	153.7
	AT-1465BL-4T	14 x 65	355 x 1651	4" T	Blue	40.6	153.7
	AT-1665BL-25T	16 x 65	406 x 1651	2.5" T	Blue	49.0	185.5
16"	AT-1665BK-25T	16 x 65	406 x 1651	2.5" T	Black	49.0	185.5
	AT-1665BL-4T	16 x 65	406 x 1651	4" T	Blue	49.0	185.5
	AT-1665NA-4T4B	16 x 65	406 x 1651	4" T 4" B	Natural	49.0	185.5
	AT-1865NA-4T	18 x 65	457 x 1651	4" T	Natural	66.7	252.5
18"	AT-1865NA-4T4B	18 x 65	457 x 1651	4" T 4" B	Natural	66.7	252.5
	AT-2162NA-4T	21 x 62	533 x 1574	4" T	Natural	88.0	333.1
21"	AT-2162NA-4T4B	21 x 62	533 x 1574	4" T 4" B	Natural	88.0	333.1
	AT-2472NA-4T	24 x 72	609 x 1828	4" T	Natural	126.8	479.9
24"	AT-2472NA-4T4B	24 x 72	609 x 1828	4" T 4" B	Natural	126.8	479.9
	AT-3072NA-4T	30 x 72	762 x 1828	4" T	Natural	195.5	740.0
30"	AT-3072NA-4T4B	30 x 72	762 x 1828	4" T 4" B	Natural	195.5	740.0
	AT-3672NA-4T	36 x 72	914 x 1828	4" T	Natural	283.0	1071.2
36"	AT-3672NA-4T4B	36 x 72	914 x 1828	4" T 4" B	Natural	283.0	1071.2
	AT-3672NA-6T6B	36 x 72	914 x 1828	6" T 6" B	Natural	283.0	1071.2
	AT-3694NA-6T6B	36 x 94	914 x 2388	6" T 6" B	Natural	318.0	1203.6
	AT-4272NA-6T6B	42 x 72	1066 x 1828	6" T 6" B	Natural	290.6	1099.9
42"	AT-4872NA-6T6B	48 x 72	1219 x 1828	6" T 6" B	Natural	477.7	1808.1
	AT-4894NA-6T6B	48 x 94	1219 x 2387	6" T 6" B	Natural	657.1	2487.1
48"	AT-6094NA-6T6B	60 x 94	1524 x 2387	6" T 6" B	Natural	710.2	2688.1
	AT-60110NA-6T6B	60 x 110	1524 x 2794	6" T 6" B	Natural	896.2	3392.1
60"	AT-6370NA-6T6B	63 x 70	1600 x 1778	6" T 6" B	Natural	687.0	2600.3
	AT-6383NA-6T6B	63 x 83	1600 x 2108	6" T 6" B	Natural	832.3	3150.3

LEGEND

T = Top Connection
 B = Bottom Connection
 25 = 2.5"
 4 = 4"

6 = 6"
 BL = Blue
 NA = Natural
 BK = Black

COLORS



OTHER COLORS AVAILABLE UPON REQUEST



Aquatrol Pressure Tanks offer a reliable and cost-effective alternative for all of your light residential to heavy-duty commercial applications. Aquatrol tanks are available in a variety of sizes ranging from 0713 to 6383 and all tanks are NSF/ANSI Standard 61 certified. Aquatrol proudly offers a 10 year warranty on tanks from 6" – 13" (5 year warranty on all tanks from 14" - 63").

Aquatrol Pressure Tanks provide outstanding performance and durability characteristics while giving you exceptional cost saving benefits. With Aquatrol there really is no need to go with a higher priced alternative.



This product has been tested and certified by NSF International against NSF/ANSI Standard 61 for material and structural requirements only.

COMPONENT

OPERATING PARAMETERS

- Max. Pressure: 150 psi (10.5 bar)
- Max. Temperature: 49 °C (120 °F)
- Min. Temperature: 1 °C (34 °F)
- Max. Vacuums: 140 mmHg (5.5" Hg)

DO NOT EXCEED SPECIFICATIONS

DESIGN PARAMETERS

- Cycle Test
- Safety Factor

SAFETY FACTORS

- 100,000 Cycle Test without leaks
- Safety Factor 4:1 (Minimum burst at 600 psi)

HANDLING INSTRUCTIONS

THIS VESSEL IS ONLY APPROVED FOR WATER PRESSURE USE. ALL OTHER USES OR SOLUTIONS TO BE USED MUST BE APPROVED BY MANUFACTURER.

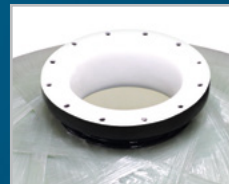
Do not use for Pneumatic or Hydro-Pneumatic application. VESSEL MUST NOT BE EXPOSED TO TEMPERATURE BELOW -29 °C (-20 °F)

* For complete installation and handling instructions, please visit:
https://aquatroltech.com/dl/manuals/AT_Tanks_Manual.pdf



This product has been tested and certified by NSF International against NSF/ANSI Standard 61 for material and structural requirements only.

COMPONENT



CONNECTIONS

- 2.5", 4", 6" Connections
- Top, Top and Bottom
- Threaded and Flange



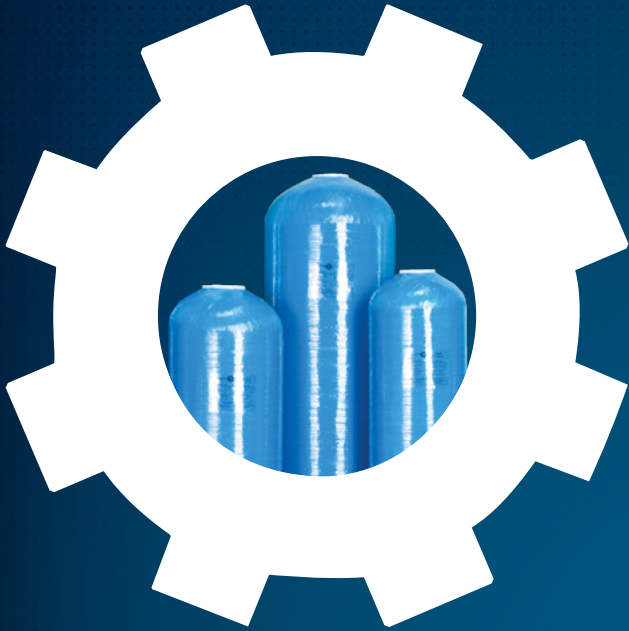
MATERIALS OF CONSTRUCTION

- Polyethylene inner shell: 7" - 36"
- FRP: 40" - 63"



WARRANTY

- 10 Year Warranty for 6" - 13" vessels
- 5 Year Warranty for 14" - 63" vessels



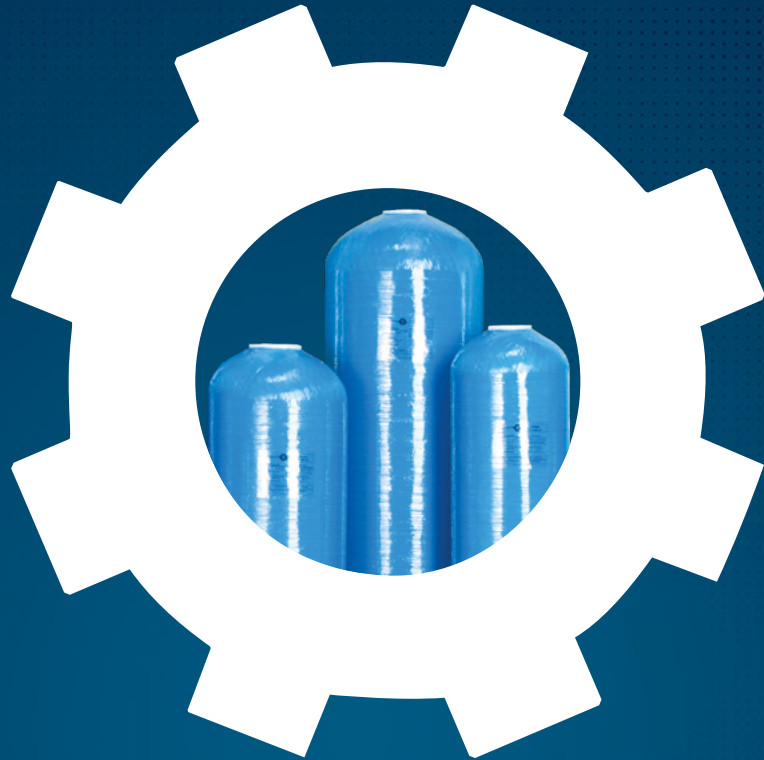
- ✓ **COST EFFECTIVE RELIABILITY**
- ✓ **EASY HANDLING AND INSTALLATION**
- ✓ **STANDARD AND TRIPOD BASE**
- ✓ **NSF/ANSI STANDARD 61 CERTIFIED**
- ✓ **OUTSTANDING PERFORMANCE AND DURABILITY**



This product has been tested and certified by NSF International against NSF/ANSI Standard 61 for material and structural requirements only.

COMPONENT





AQUATROL™
PRESSURE TANKS

P.O. Box 2235 Chino Hills, CA 91709 · USA